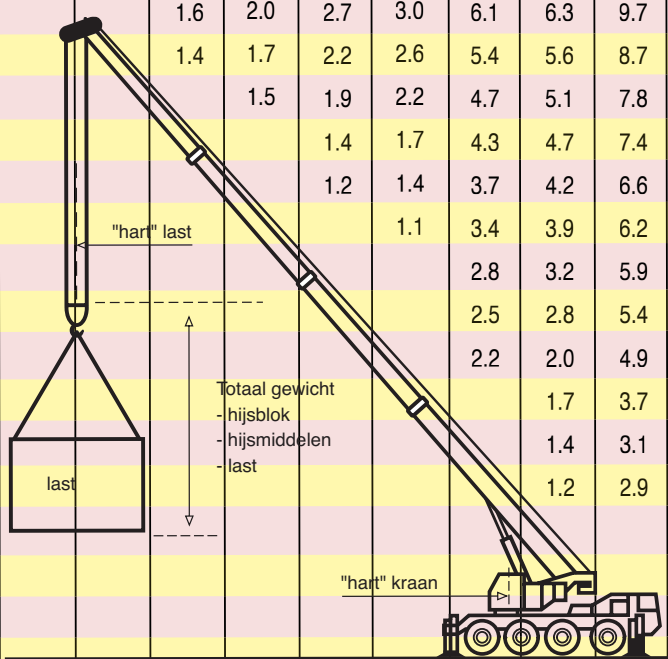


Mobiele Telekranen

merk type	Liebherr AT 360	Liebherr AT 460	Liebherr AT 500	Liebherr AT 600	Liebherr AT 700	Liebherr AT 900	Liebherr AT 1100	Liebherr AT 1120	Liebherr AT 1160	Liebherr AT 1225
stempelbreedte	6.00m	6.30m	6.30m	6.30m	6.30m	7.00m	7.00m	7.60m	8.60m	8.60m

Vlucht	Bruto hijscapaciteit in tonnen									
--------	--------------------------------	--	--	--	--	--	--	--	--	--

Vlucht	Bruto hijscapaciteit in tonnen									
3 m.	35.0	45.0	50	60.0	70.0	90.0	100.0	120.0	160.0	225.0
4 m.	26.6	35.0	36.8	43.5	55.8	73.0	78.0	95.0	113.0	171.0
5 m.	21.4	29.1	30.6	37.0	47.4	59.0	65.0	79.0	97.0	140.0
6 m.	17.7	24.0	25.5	31.5	41.1	47.5	55.0	66.0	87.0	117.0
7 m.	14.1	19.3	21.8	26.0	34.0	41.0	47.0	56.0	77.0	100.0
8 m.	11.3	16.2	18.5	21.2	23.2	33.5	41.0	48.0	67.0	87.0
9 m.	9.4	13.3	15.6	17.9	20.7	28.6	36.0	42.0	59.0	76.0
10 m.	8.2	11.3	13.3	15.2	18.1	24.6	31.5	37.0	50.0	68.0
12 m.	6.0	8.5	10.1	11.6	14.0	18.4	25.3	29.1	41.5	56.0
14 m.	4.7	6.7	7.8	9.3	11.1	14.5	20.8	24.8	31.0	46.0
16 m.	3.6	5.4	6.4	7.7	9.0	11.9	17.4	19.4	25.4	38.5
18 m.	2.9	4.4	5.3	6.5	7.6	9.9	14.7	15.8	23.0	33.0
20 m.	2.5	3.6	4.4	5.5	6.4	8.4	12.7	14.2	18.5	28.5
22 m.	2.0	3.0	3.7	4.7	5.5	7.2	11.1	12.2	17.4	25.4
24 m.	1.7	2.5	3.2	4.1	4.6	6.2	9.7	10.7	15.2	23.0
26 m.	1.4	2.1	2.7	3.4	4.3	5.4	8.5	9.2	13.3	20.0
28 m.		1.2	2.3	3.0	4.1	4.4	7.7	8.0	12.1	17.4
30 m.			1.9	2.5	3.2	3.8	6.9	7.2	10.6	15.8
32 m.			1.6	2.0	2.7	3.0	6.1	6.3	9.7	13.6
34 m.			1.4	1.7	2.2	2.6	5.4	5.6	8.7	12.7
36 m.				1.5	1.9	2.2	4.7	5.1	7.8	10.9
38 m.					1.4	1.7	4.3	4.7	7.4	10.1
40 m.					1.2	1.4	3.7	4.2	6.6	9.5
42 m.						1.1	3.4	3.9	6.2	8.5
44 m.							2.8	3.2	5.9	7.9
46 m.							2.5	2.8	5.4	7.0
48 m.							2.2	2.0	4.9	6.6
50 m.								1.7	3.7	6.2
52 m.								1.4	3.1	4.6
54 m.								1.2	2.9	4.3
56 m.										3.9
58 m.										3.5
60 m.										3.3
62 m.										3.0
64 m.										2.7
66 m.										2.4
68 m.										2.2
70 m.										2.0
72 m.										1.7
74 m.										1.5
76 m.										1.4
78 m.										1.2



VAN GRINSVEN BV
0486 - 461845

Mobiele Torenkranen

	Spiering SK377 AT3	Liebherr MK63 AT3	Spiering SK477 AT4	Liebherr MK80 AT4	Spiering SK488 AT4	Spiering SK498 AT4	Spiering SK599 AT 5	Liebherr MK110 AT 5
haak hoogte	19m	25m	25m	28m	25m	26m	33m	33m
	kraan opgetopt = op aanvraag							
	6.40m	6.90m	6.15m	7.00m	6.70m	6.85m	7.66m	8.20m

Netto hijscapaciteit in kg								
----------------------------	--	--	--	--	--	--	--	--

Netto hijscapaciteit in kg								
10 m.	7.500	7.200	7.000	8.000	8.000	8.000	9.000	8.000
12 m.	6.325	5.980	6.820	6.870	8.000	8.000	9.000	8.000
13 m.	5.745		6.015		7.730	7.890	9.000	8.000
14 m.	5.260	5.090	5.505	5.850	7.085	7.225	8.315	8.000
15 m.	4.845		5.070		6.535	6.665	7.670	7.831
16 m.	4.490	4.430	4.700	5.080	6.060	6.180	7.115	7.278
17 m.	4.175		4.375		5.650	5.760	6.630	6.794
18 m.	3.905	3.910	4.090	4.480	5.285	5.390	6.205	6.367
19 m.	3.665		3.840		4.970	5.065	5.830	5.987
20 m.	3.450	3.490	3.620	4.000	4.680	4.770	5.495	5.647
21 m.	3.255		3.415		4.425	4.510	5.195	5.341
22 m.	3.080	3.140	3.235	3.600	4.195	4.275	4.925	5.064
23 m.	2.925		3.075		3.990	4.060	4.680	4.812
24 m.	2.780	2.860	2.925	3.270	3.795	3.865	4.460	4.582
25 m.	2.650		2.785		3.625	3.690	4.255	4.371
26 m.	2.530	2.610	2.660	2.990	3.465	3.525	4.070	4.177
27 m.	2.420		2.545		3.315	3.375	3.895	3.998
28 m.	2.315	2.410	2.440	2.750	3.180	3.235	3.735	3.832
29 m.	2.220		2.340		3.055	3.105	3.590	3.678
30 m.	2.130	2.220	2.250	2.500	2.935	2.985	3.450	3.534
31 m.	2.050		2.165		2.825	2.875	3.325	3.400
32 m.	1.975	2.070	2.085	2.360	2.725	2.770	3.205	3.275
33 m.	1.900		2.010		2.630	2.620	3.095	3.158
34 m.		1.930	1.940	2.190	2.540	2.580	2.990	3.047
35 m.			1.875		2.455	2.495	2.890	2.943
36 m.		1.800	1.815	2.050	2.375	2.410	2.795	2.845
37 m.			1.755		2.300	2.335	2.710	2.753
38 m.			1.700	19.20	2.230	2.265	2.625	2.665
39 m.					2.165	2.195	2.550	2.582
40 m.				1.810	2.100	2.130	2.475	2.504
41 m.						2.070	2.405	2.429
42 m.				1.700		2.010	2.335	2.358
43 m.						1.955	2.270	2.290
44 m.						1.900	2.210	2.226
45 m.							2.155	2.164
46 m.							2.100	2.105
47 m.							2.045	2.049
48 m.							1.995	1.995
49 m.							1.945	1.943
50 m.							1.900	1.893
51 m.								1.846
52 m.								1.800